

Specifications

| Models | S-60 X / S-60 XC | | S-65 | |
|---------------------------------------|------------------|---------------|-------------|---------------|
| Measurements | US | Metric | US | Metric |
| Working height maximum* | 64 ft 4 in | 19.79 m | 71 ft | 21.81 m |
| Platform height maximum | 58 ft 4 in | 17.79 m | 65 ft | 19.81 m |
| Horizontal reach maximum | 50 ft 10 in | 15.48 m | 56 ft 2 in | 17.10 m |
| Below ground reach | 5 ft 7 in | 1.70 m | 8 ft 11 in | 2.72 m |
| A Platform length | 3 ft | 0.91 m | 3 ft | 0.91 m |
| B Platform width | 8 ft | 2.44 m | 8 ft | 2.44 m |
| C Height - stowed | 8 ft 11 in | 2.72 m | 8 ft 11 in | 2.72 m |
| Height - stowed Trax | 9 ft 1 in | 2.77 m | 9 ft 1 in | 2.77 m |
| D Length - stowed | 27 ft 9 in | 8.46 m | 30 ft 11 in | 9.42 m |
| Length - transport (jib tucked under) | | | 25 ft | 7.60 m |
| E Width (with standard tires) | 8 ft 2 in | 2.49 m | 8 ft 2 in | 2.49 m |
| Width - Trax | 8 ft 6 in | 2.59 m | 8 ft 6 in | 2.59 m |
| F Wheelbase | 8 ft 3 in | 2.50 m | 8 ft 3 in | 2.50 m |
| G Ground clearance - center | 1 ft 2.5 in | 0.37 m | 1 ft 2.5 in | 0.37 m |
| - Trax center | 1 ft 5 in | 0.43 m | 1 ft 5 in | 0.43 m |

Productivity

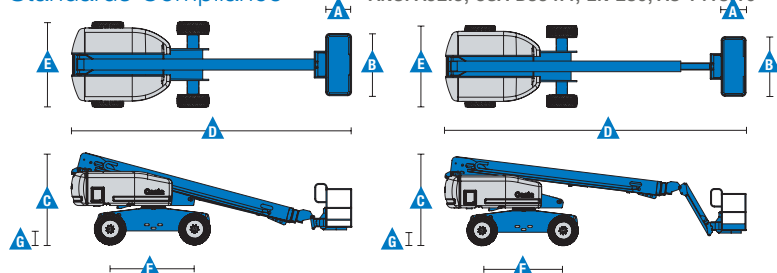
| | | | | |
|-------------------------------|---|---------------|----------------------|----------|
| Lift capacity - X | 500 lbs/1000 lbs | 227 kg/454 kg | 500 lbs | 227 kg |
| - XC | 750 lbs/1250 lbs | 340 kg/567 kg | | |
| Platform rotation | 160° | | 160° | |
| Vertical jib rotation | — | | 135° | |
| Turntable rotation | 360° continuous | | 360° continuous | |
| Turntable tailswing | 4 ft | 1.22 m | 4 ft | 1.22 m |
| Drive speed - 4WD stowed | 3.0 mph | 4.8 km/h | 3.0 mph | 4.8 km/h |
| - Trax stowed | 2.3 mph | 3.7 km/h | 2.3 mph | 3.7 km/h |
| - raised or extended | 0.68 mph | 1.1 km/h | 0.68 mph | 1.1 km/h |
| Gradeability - 2WD - stowed** | 30% | | 30% | |
| - 4WD - stowed** | 45% | | 45% | |
| Turning radius - inside | 7 ft 9 in | 2.36 m | 7 ft 9 in | 2.36 m |
| - outside | 18 ft 2 in | 5.5 m | 18 ft 2 in | 5.5 m |
| - Trax option inside | 12 ft | 3.66 m | 12 ft | 3.66 m |
| - Trax option outside | 22 ft 3 in | 6.8 m | 22 ft 3 in | 6.8 m |
| Controls | 12 V DC proportional | | 12 V DC proportional | |
| Tires - RT Lug | 355/55D 625 | | 355/55D 625 | |
| Power | 49 hp (36.54 kW) Deutz diesel T4f D2.9L4 | | | |
| Power source | 49 hp (36.54 kW) Perkins diesel T4f 404D-22 | | | |
| | 74 hp (55.18 kW) Deutz turbo diesel T4i D2011L04i | | | |
| | 60 hp (44.74 kW) Ford gas/LPG MSG425 | | | |
| Auxiliary power unit | 12 V DC | | 12 V DC | |
| Hydraulic tank capacity | 45 gal | 170 L | 45 gal | 170 L |
| Fuel tank capacity - diesel | 35 gal | 132 L | 35 gal | 132 L |
| - gas | 30 gal | 113.6 L | 30 gal | 113.6 L |

Weight***

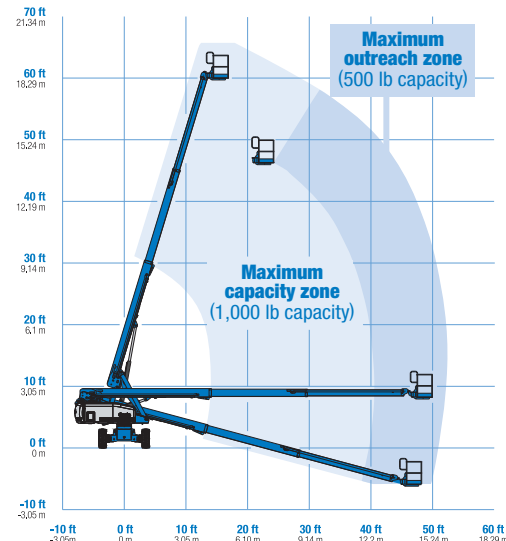
| | | | | |
|--------|------------|-----------|------------|-----------|
| 2WD | 20,572 lbs | 9,331 kg | 22,100 lbs | 10,024 kg |
| 4WD | 20,742 lbs | 9,408 kg | 22,270 lbs | 10,102 kg |
| Trax | 25,420 lbs | 11,530 kg | 26,960 lbs | 12,229 kg |
| XC**** | 21,967 lbs | 9,964 kg | | |

Standards Compliance

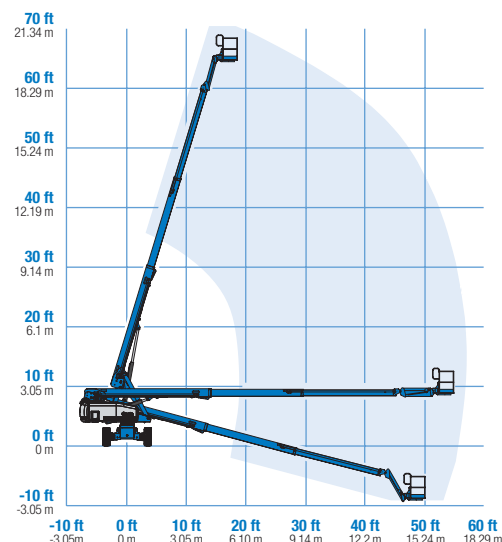
ANSI A92.5, CSA B354.4, EN 280, AS 1418.10



Range Of Motion S-60 X



Range Of Motion S-65 (500 lb capacity)



* The metric equivalent of working height adds 2 m to platform height. U.S. adds 6 ft to platform height.

** Gradeability applies to driving on slopes, see operator's manual for details regarding slope ratings.

*** Weight will vary depending on slope, see operator's manual for details regarding slope ratings.

**** S-60 XC not available with track system

Features

| Standard Features | Easily Configured To Meet Your Needs | Options & Accessories |
|--|--|--|
| Measurements <ul style="list-style-type: none"> S-60 X <ul style="list-style-type: none"> 64 ft 4 in (19.79 m) working height 50 ft 10 in (15.48 m) horizontal reach 500 lbs (227 kg) unrestricted and 1000 lbs (454 kg) restricted lift capacity S-60 XC <ul style="list-style-type: none"> 64 ft 4 in (19.79 m) working height 50 ft 10 in (15.48 m) horizontal reach 750 lbs (340 kg) unrestricted and 1250 lbs (680 kg) restricted lifting capacity S-65 <ul style="list-style-type: none"> 71 ft (21.81 m) working height 56 ft 2 in (17.10 m) horizontal reach 500 lbs (227 kg) lift capacity Productivity <ul style="list-style-type: none"> Self-leveling platform 160° hydraulic platform rotation Proportional joystick controls Fuel select switch on platform and ground control panels (Gas/LPG models) Drive enable AC power cord to platform Horn Hour meter Tilt alarm Descent alarm 360° continuous turntable rotation Positive traction drive Two speed wheel motors Telematics ready connector Entry Toeboard Lift Guard™ Contact Alarm Power <ul style="list-style-type: none"> 12 V DC auxiliary power Anti-restart engine protection Auto engine fault shutdown Swing out engine tray Intake air heater (Deutz engine) | Platform Options <ul style="list-style-type: none"> Steel 8 ft (2.44 m) tri entry with side swing gate (standard) Steel 6 ft (1.83 m) dual entry with side swing gate Steel 4 ft (1.22 m) Jib Options <ul style="list-style-type: none"> Non-jib (S-60 only) 5 ft (1.52 m) jib boom (S-65 only) Engine Options <ul style="list-style-type: none"> 49 hp (36.54 kW) Deutz diesel T4f* (standard) 49 hp (36.54 kW) Perkins diesel T4f* 74 hp (55.18 kW) Deutz turbo diesel T4f* 60hp (44.74 kW) Ford gas/LPG Drive Options <ul style="list-style-type: none"> 2WD 4WD (standard) Axle Options <ul style="list-style-type: none"> Active oscillation (4WD) Non-oscillating (2WD) Tire Options <ul style="list-style-type: none"> Rough terrain air-filled (standard) Rough terrain foam-filled Rough terrain non-marking (air or foam-filled) High flotation air-filled Sealant treated air-filled Trax (track system) | Productivity Options <ul style="list-style-type: none"> Half-mesh platform inserts Platform top auxiliary rail Welder Ready package Air line to platform Hydraulic oil cooler† Specialty hydraulic oil (cold weather, fire resistant, or biodegradable) Hostile environment kit Deluxe hostile environment kit Aircraft protection package (6 ft platform) Thumb rocker steer Alarm package Panel cradle package Lockable platform control box covers Second battery Tow package Work light package Operator Protective Structure***** Fall Arrest Bar Power Options <ul style="list-style-type: none"> Engine gauge package*** AC generator packages (110V/-220V/50Hz, 3000W) Cold Weather Packages Diesel scrubber/muffler (catalytic muffler)**** LPG tank 33.5 lbs (15.19 kg) capacity Intake air pre-cleaner***** |



* Also available as Tier 4i in limited regions
 ** Available only with Track system option
 *** Available only with Ford engine
 **** Available only with Tier4i diesel engines
 ***** Available through aftermarket parts only
 † Standard on 4WD