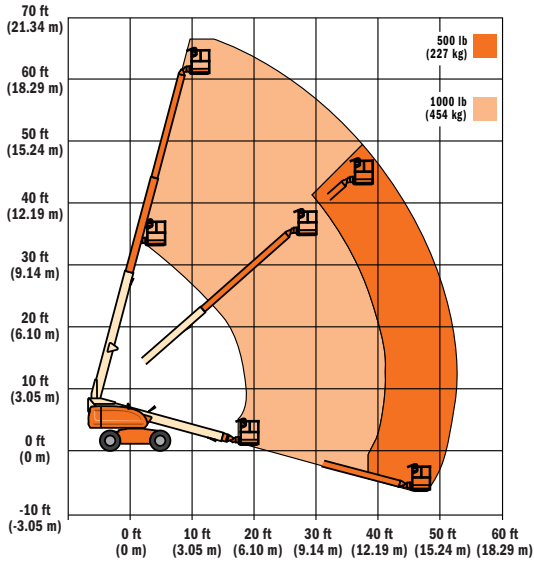
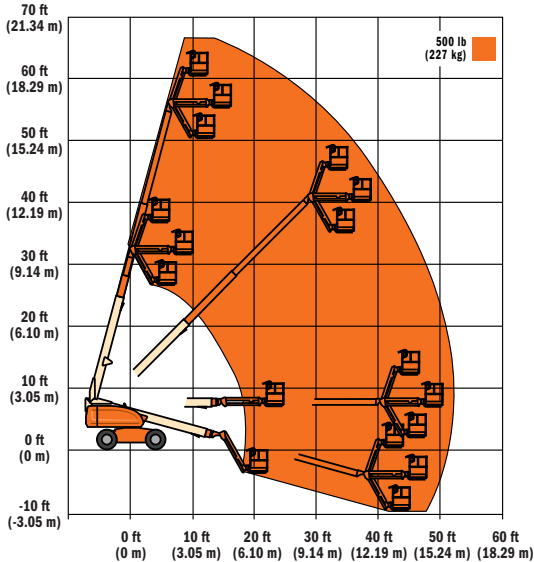


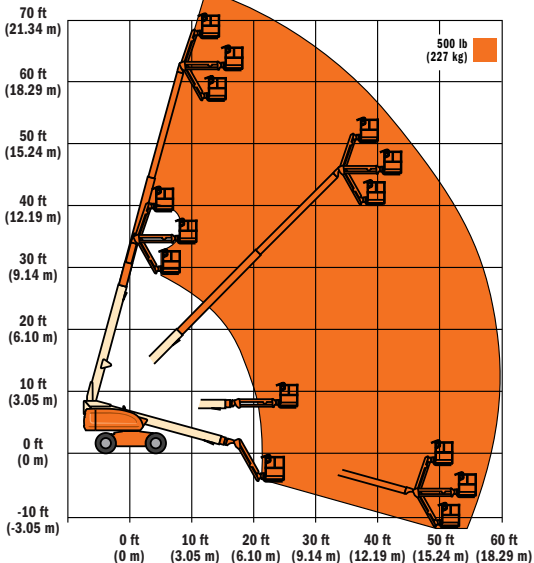
600S



600SJ



660SJ



Model 600S

Reach Specifications

Platform Height	60 ft 3 in. (18.36 m)
Horizontal Outreach	49 ft 6 in. (15.09 m)
Swing	360° Continuous
Platform Capacity—Restricted	1,000 lb (454 kg)
Platform Capacity—Unrestricted	500 lb (227 kg)
Platform Rotator	160° Hydraulic

Dimensional Data

A. Platform Size	36 x 96 in. (0.91 x 2.44 m)
B. Overall Width	7 ft 11 in. (2.41 m)
C. Tailswing (working condition)	3 ft 9 in. (1.14 m)
D. Stowed Height	8 ft 5 in. (2.57 m)
E. Stowed Length	27 ft 11 in. (8.51 m)
F. Wheelbase	8 ft 1 in. (2.46 m)
G. Ground Clearance	12 in. (30 cm)
Gross Vehicle Weight ¹	25,100 lb (11,385 kg)
Max. Ground Bearing Pressure	67 psi (4.7 kg/cm ²)

Chassis

Drive Speed 2WD	4.25 mph (6.8 kmph)
Drive Speed 4WD	4.25 mph (6.8 kmph)
Gradeability 2WD	30%
Gradeability 4WD	45%
Tires	15 x 19.5 Lug Tread
Axle Oscillation	8 in. (20 cm)
Turning Radius, (Inside/Outside)	
600S 2WS	11 ft 4 in./17 ft 9 in. (3.45 m/5.41 m)
600S 4WS	5 ft 5 in./11 ft 4 in. (1.65 m/3.45 m)

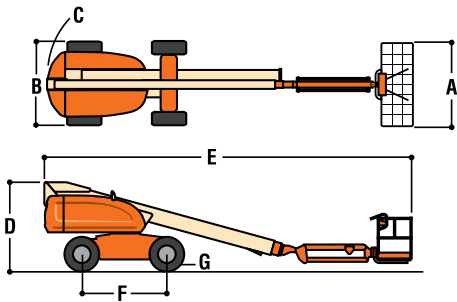
Power Source

Dual Fuel Engine, Ford LRG-425	82 hp (61 kW)
Diesel Engine, Deutz F4M1011F	65 hp (48 kW)
Diesel Engine, Caterpillar 3044C	63.3 hp (47.2 kW)
Fuel Tank Capacity	40 gal (151 L)
Hydraulic Reservoir	32 gal (121 L)

Auxiliary Power

12V DC

1. Certain options or country standards increase weight.



Standard Features

- Platform: 36 in. x 96 in. (0.91 m x 2.44 m)
- SkyPower™ Package
- Oscillating Axle
- Inward Swinging Gate
- Hydraulic Platform Rotator
- AC Receptacle in the Platform
- 5 Degree Tilt Alarm/Indicator Light
- Swing-Out Engine Tray
- 12V DC Auxiliary Power
- Hourmeter
- Control ADE™ System
- All Motion Alarm Lifting Lugs



20M 600SJ

BOOM LIFT



Experience | Safety | Innovation

Model 600SJ

Model 660SJ

60 ft 5 in. (18.42 m)	66 ft 8 in. (20.32 m)
50 ft 5 in. (15.37 m)	56 ft 9 in. (17.3 m)
360° Continuous	360° Continuous
500 lb (227 kg)	500 lb (227 kg)
500 lb (227 kg)	500 lb (227 kg)
180° Hydraulic	180° Hydraulic

36 x 96 in. (0.91 x 2.44 m)	36 x 96 in. (0.91 x 2.44 m)
7 ft 11 in. (2.41 m)	7 ft 11 in. (2.41 m)
3 ft 9 in. (1.14 m)	3 ft 9 in. (1.14 m)
8 ft 5 in. (2.57 m)	8 ft 5 in. (2.57 m)
31 ft (9.45 m)	33 ft 6 in. (10.21 m)
8 ft 1 in. (2.46 m)	8 ft 1 in. (2.46 m)
12 in. (30 cm)	12 in. (30 cm)
26,300 lb (11,930 kg)	28,000 lb (12,700 kg)
70 psi (4.9 kg/cm²)	75 psi (5.27 kg/cm²)

4.25 mph (6.8 kmph)	4.25 mph (6.8 kmph)
4.25 mph (6.8 kmph)	4.25 mph (6.8 kmph)
30%	30%
45%	45%
15 x 19.5 pneumatic	15 x 19.5 Lug Tread
8 in. (20 cm)	8 in. (20 cm)

11 ft 4 in./17 ft 9 in. (3.45 m/5.41 m)	11 ft 4 in./17 ft 9 in. (3.45 m/5.41 m)
5 ft 5 in./11 ft 4 in. (1.65 m/3.45 m)	5 ft 5 in./11 ft 4 in. (1.65 m/3.45 m)

82 hp (61 kW)	82 hp (61 kW)
65 hp (48 kW)	65 hp (48 kW)
63.3 hp (47.2 kW)	63.3 hp (47.2 kW)
40 gal (151 L)	40 gal (151 L)
32 gal (121 L)	32 gal (121 L)
12V DC	12V DC

- Proportional Controls
- Gull-Wing Hoods
- Operators Tool Tray
- Foam Filled Tires
- Platform Console Machine Status Light Panel*
- Lifting/Tie Down Lugs
- Engine Distress Warning/Shutdown — Selectable via JLG Analyzer

*Provides indicator lights at platform control console for system distress, fuel level, low fuel, 5 degree tilt light and foot switch status.

Individual Options

- Platform: 36 in. x 72 in. (0.91 m x 1.83 m)
- Light Package¹
- Flashing Amber Beacon
- Soft-Touch System 6 ft./8 ft. Platform (1.83 m/2.44 m)
- Catalytic Muffler
- Cold Weather Start²
- Hostile Environment Kit³
- Platform Worklights
- 4 Wheel Steer

- 1. Includes platform mounted work lights and drive/backup lights.
- 2. Includes glow plugs, battery heater and oil tank heater.
- 3. Includes console cover, boom wipers and cylinder bellows.

Options to Create Your Workstation in the Sky™ Product

Transform your Model 600S, 600SJ, or 660SJ into a true Workstation in the Sky™ product with exclusive options and accessories from JLG. Whether designed for a specific application like the SkyWelder™ Package or to meet a variety of needs like the SkyPower™ Package, JLG has many options available to increase your productivity and enhance your work environment.



SkyPower™ Package

JLG delivers more power where you need it with the SkyPower™ Package. Machines outfitted with the SkyPower Package include a 7500W self-contained generator, plus a power cable and a 1/2 inch air line routed through the boom's power track to the platform. As an added benefit, the SkyPower Package is designed to work with various add-on accessories, including the SkyWelder™ Package.

SkyWelder™ Package

Miller® welder is tucked into the SkyPower™ boom platform. Conserves space and provides stick and TIG capability. Eliminates potentially dangerous leads hanging over the rails and cost of a stand-alone welder and power supply. Wire feed capability and other convenient features are available.



SkyGlazier™ Package

The first and only factory-approved glass and panel tray. Utilizes industry leading JLG capacity to get materials to the work site. Improves productivity and reduces operator fatigue, while protecting panels from damage.



Nite Bright™ Package

JLG's all new Nite Bright Package consists of six 40-watt lights—four chassis mounted lights and two platform mounted lights. The Nite Bright™ Package illuminates your work site plus the area around the chassis for increased visibility, and is perfect for nighttime work or any job with low lighting levels.

SkyCutter™ Package

Cut faster and cleaner with an on-board Miller® plasma cutter. Eliminate the dangers of Oxygen/ Acetylene tanks and hoses draped over the railings. Add SkyCutter™ Package (including a small air compressor) to any SkyPower™ unit for increased productivity.



SkySaw™ Package

Cut more in a day's time with the first integrated wall sawing and drilling system. Self-contained hydraulics and water tanks eliminate stand-alone power packs and water trucks. The hydraulic powered saw positioner reduces operator fatigue. Plus, an onboard pressure washer reduces costly back-charges by enabling on-the-spot pressure washing.

SkyAir Package

Power air tools with JLG's on-board air compressor. Powered by SkyPower, SkyAir is a fully integrated solution that provides increased productivity by eliminating the dangers, costs and hassles of tethering to a separate ground-based compressor.



Keep checking www.jlg.com for additional Workstation in the Sky™ accessories.

*Miller® is a trademark of Miller Electric.



AUCKLAND
100 Leonard Road
Mt Wellington
Auckland

WELLINGTON
Unit 3, 162 Gracefield
Lower Hutt
Wellington

CHRISTCHURCH
28 Nga Mahi Road
Sockburn
Christchurch