

16M Z4525J-DC

BOOM LIFT

Specifications

Models	Z-45/25 DC & Bi		Z-45/25J DC & Bi	
Measurements	US	Metric	US	Metric
Working height maximum*	51 ft 6 in	15.87 m	51 ft 9 in	15.94 m
Platform height maximum	45 ft 6 in	13.87 m	45 ft 9 in	13.94 m
Horizontal reach maximum	25 ft	7.62 m	25 ft 1 in	7.65 m
Up and over clearance maximum	23 ft 1 in	7.04 m	23 ft 9 in	7.24 m
A Platform length	2 ft 6 in	0.76 m	2 ft 6 in	0.76 m
B Platform width	6 ft	1.83 m	6 ft	1.83 m
C Height - stowed	6 ft 7 in	2.00 m	6 ft 7 in	2.00 m
D Length - stowed	18 ft 3 in	5.56 m	22 ft 5 in	6.83 m
E Width	5 ft 10.3 in	1.79 m	5 ft 10.3 in	1.79 m
F Wheelbase	6 ft 8 in	2.03 m	6 ft 8 in	2.03 m
G Ground clearance - center	9.5 in	0.24 m	9.5 in	0.24 m
Productivity				
Lift capacity	500 lbs	227 kg	500 lbs	227 kg
Platform rotation	180°		160°	
Vertical jib rotation	—		135°	
Turntable rotation	355° non-continuous		355° non-continuous	
Turntable tailswing	zero		zero	
Drive speed - stowed	3.0 mph	4.8 km/h	3.0 mph	4.8 km/h
Drive speed - raised**	0.61 mph	1.0 km/h	0.61 mph	1.0 km/h
Gradeability - stowed***	30%		30%	
Turning radius - inside	6 ft	1.8 m	6 ft	1.8 m
Turning radius - outside	14 ft	4.27 m	14 ft	4.27 m
Controls	24V DC proportional		24V DC proportional	
Tires	9 x 14.5 in		9 x 14.5 in	

Power

Power source - DC	48V DC (eight 6 V batteries, 350 Ah capacity)
Power source - Bi-Energy	48V DC (eight 6 V batteries, 350 Ah capacity) with 13.3hp (9.9kW) Kubota T4f Z482 diesel driven alternator

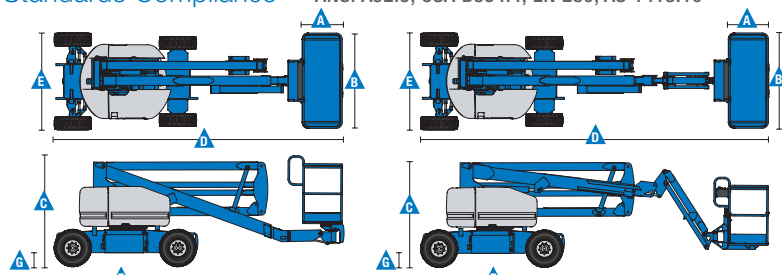
Auxiliary power unit	24V DC		24V DC	
Hydraulic tank capacity	8 gal	30.3 L	8 gal	30.3 L
Fuel tank capacity- Bi-Energy	9 gal	34.1 L	9 gal	34.1 L

Weight****

DC	15,350 lbs	6,963 kg	16,300	7,394 kg
Bi-Energy	15,850 lbs	7,190 kg	16,800	7,620 kg

Standards Compliance

ANSI A92.5, CSA B354.4, EN 280, AS 1418.10



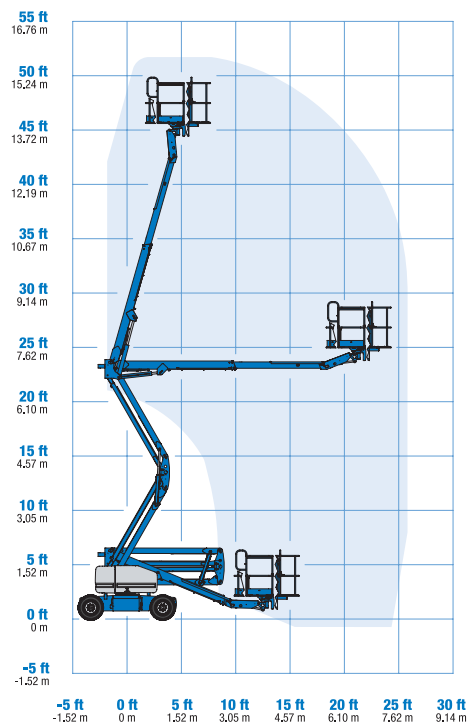
* The metric equivalent of working height adds 2 m to platform height. U.S. adds 6 ft to platform height.

** In lift mode (platform raised), the machine is designed to operate on firm, level surfaces only.

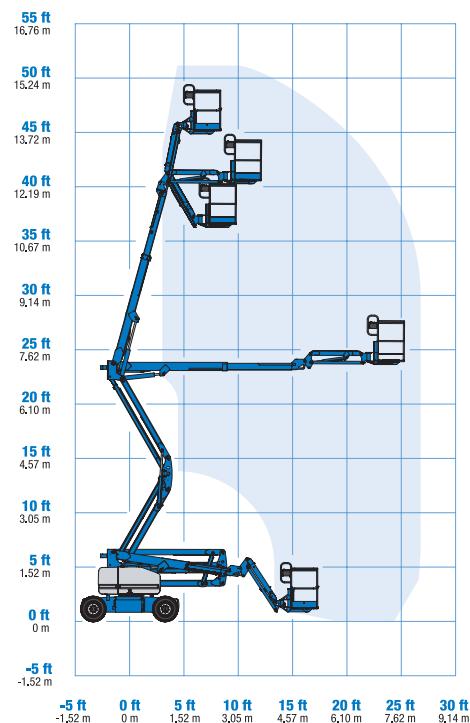
*** Gradeability applies to driving on slopes. See operator's manual for details regarding slope ratings.

**** Weight will vary depending on options and/or country standards.

Range Of Motion Z-45/25



Range Of Motion Z-45/25J



Features

Standard Features	Easily Configured To Meet Your Needs	Options & Accessories
Measurements <ul style="list-style-type: none"> Z-45/25 <ul style="list-style-type: none"> 51 ft 6 in (15.87 m) working height 25 ft (7.62 m) horizontal reach 23 ft 1 in (7.04 m) up and over clearance Up to 500 lbs (227 kg) lift capacity Z-45/25J <ul style="list-style-type: none"> 51 ft 9 in (15.94 m) working height 25 ft 1 in (7.65 m) horizontal reach 22 ft 1 in (6.73 m) up and over clearance Up to 500 lbs (227 kg) lift capacity Productivity <ul style="list-style-type: none"> Self-leveling platform Hydraulic platform rotation Proportional joystick controls Thumb rocker steer Drive enable AC power to platform Horn Hour meter Tilt alarm Zero tailswing 355° non-continuous turntable rotation Telematics Ready Connector Entry toeboard on 6 ft (1.83m) platform Lift Guard™ Contact Alarm Dual parallelogram for vertical wall tracking Power <ul style="list-style-type: none"> 48V deep cycle battery pack 24V DC auxiliary power 13.3hp (9.9kW) Kubota T4f Z482 diesel driven alternator. (Bi-energy model only) Battery charge indicator-BCI (Bi-energy model only) Universal 30A battery smart charger 	Platform Options <ul style="list-style-type: none"> Steel 6 ft (1.83 m) dual entry with side swing gate (standard) Steel 3 ft 10 in (1.17m) with sliding mid-rail Jib Options <ul style="list-style-type: none"> Non-jib Articulating 5 ft (1.52 m) jib boom Power <ul style="list-style-type: none"> 48V DC (eight 6V 350 Ah batteries) Drive <ul style="list-style-type: none"> 2WD Tire Options <ul style="list-style-type: none"> Industrial foam-filled (standard) Industrial non-marking foam-filled 	Productivity <ul style="list-style-type: none"> Half-mesh platform inserts Platform top auxiliary rail Air line to platform Specialty hydraulic oil (fire resistant or biodegradable) Aircraft protection package* Pipe cradle (pair)** Alarm package Panel cradle package Light package Lockable platform control box cover Tow package Operator Protective Structure** Fall Arrest Bar Florescent tube caddy** Power <ul style="list-style-type: none"> AGM batteries EE UL583 Fire Protection rating (DC only) Battery charge indicator-BCI (DC only) Low voltage interrupt with BCI Cold Weather Package (Bi-Energy only) 800 watt inverter (DC only) Diesel catalytic muffler (Bi-Energy only)



* Reduces platform capacity to 440 lbs (only available on Jib models)

** Available through aftermarket parts only