

### APPLICATIONS

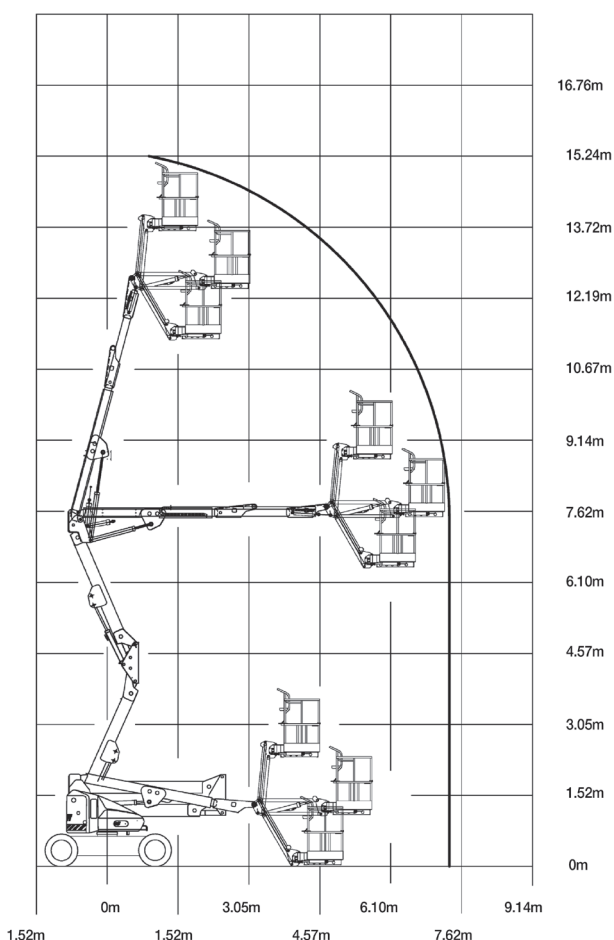
- Facilities maintenance
- Shopping centres and other indoor/outdoor areas
- Manufacturing and warehouse applications and stock-takes
- Electricians
- Plumbers
- Window installers
- All maintenance and construction work
- Factory fit-outs before electrical power is connected

### QUESTIONS TO ASK

- What are the ground conditions in the work area?
- What is the working height needed for the job?
- What is the up and over reach required for the job?
- Do you need an extension lead outlet in the platform?
- Do you need non-marking tyres?
- Do you have 240V AC power on site?

### KEY SELLING POINTS

- Smooth control, proportional electric drive, with two speed ranges
- Proportional lift and swing controls at the platform
- Jib boom and basket rotate
- Cylinder boots protect cylinder rods from overspray and contaminants
- Non-marking urethane filled tyres
- Multi axis 4 degree level sensor
- Plug in JLG analyser at platform and base to indicate system functions for servicing and adjustment
- On "M" version, a Kubota single cylinder diesel engine to operate 55 Amp Mechtron charger when battery voltage drops below a prescribed level, charge on the go



### SPECIFICATIONS

#### Performance:

Platform Height (max.)	13.72m
Working Height	15.72m
Platform Rotation Angle	180°
Jib Raise Angle	86°
Jib Lower Angle	55°
Jib Articulation Range	141°
Maximum Horizontal Outreach	7.24m
Platform Capacity	230kg
Slewing Angle	360°
Continuous Slew	No

#### Dimensions:

Stowed Length	6.50m
Stowed Height	2.01m
Overall Width	1.75m
Wheelbase	2.01m
Ground Clearance	0.22m
Platform Width	1.52m
Platform Length	0.76m
Overall Jib Length	1.24m
Tailswing	0m

#### Power:

Power Source	Electric DC
Engine Make	Kubota
Engine Model	OC 60
Engine Power	4kW
Engine Fuel	Diesel
DC Voltage	48V
DC Power	370 Amp h
Genset	Kubota

#### Travel:

Tyre Size	240/55-17.5
Tyre Type	Urethane Filled/Non-marking
Inside Turn Radius	0.61m
Outside Turn Radius	3.15m
Gradeability	30%

#### Weights and Capabilities:

Hydraulic Tank Capacity	15 Ltr
Operating Weight	6,700kg