



**The newly released 2095 is the best performing Spider Lift that weighs under 3.5 t including a trailer. This means that this machine could be towed behind most tradesmen's vehicles.**

With a 250kg basket capacity, the 2095 has an incredible unrestricted reach of 19.4 m vertically, and 9.5 m horizontally. This provides the operator with superb up and over reach. Additionally, the 2095 has an excellent ability to level up on 20° slopes, which compliments the machines Auto Level feature.

The 2095's Remote Control Unit also provides the operator with smooth proportional functions and allows the operator to move into tight access situations with ease. At only 790 mm wide, 4870 mm long and 1990 mm high, the 2095 has the ability to navigate through a single door. A Hybrid option also provides the ability to work safely and effectively indoors.

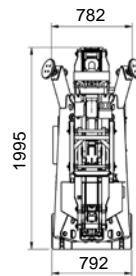
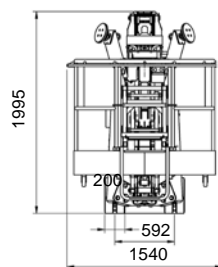
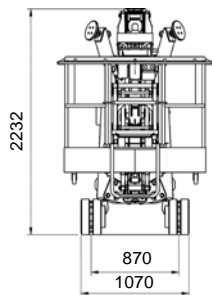
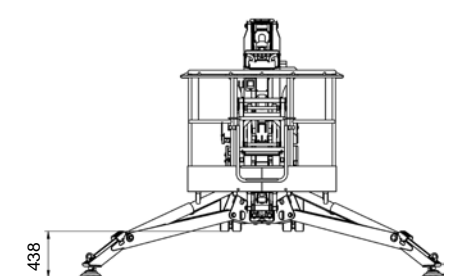
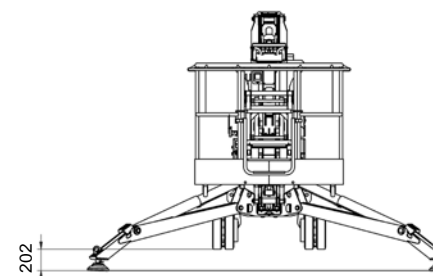
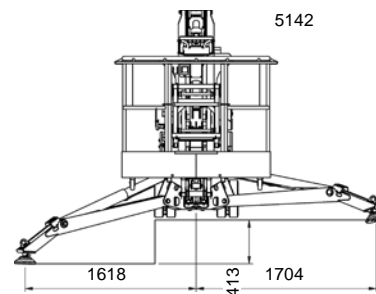
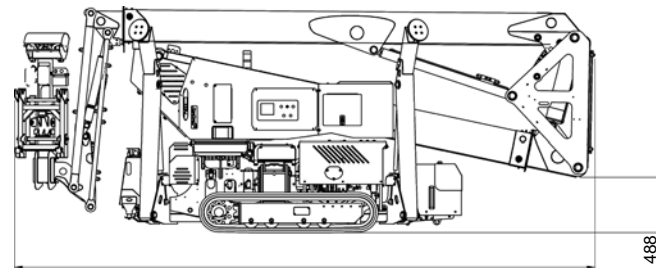
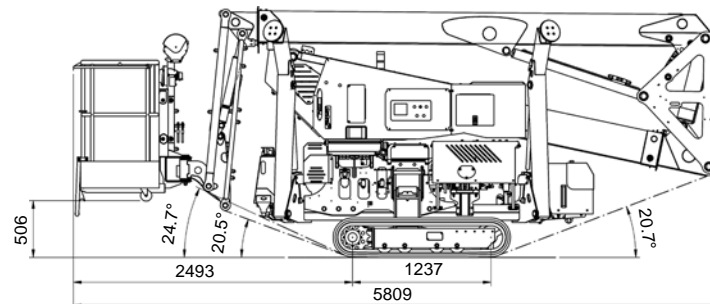
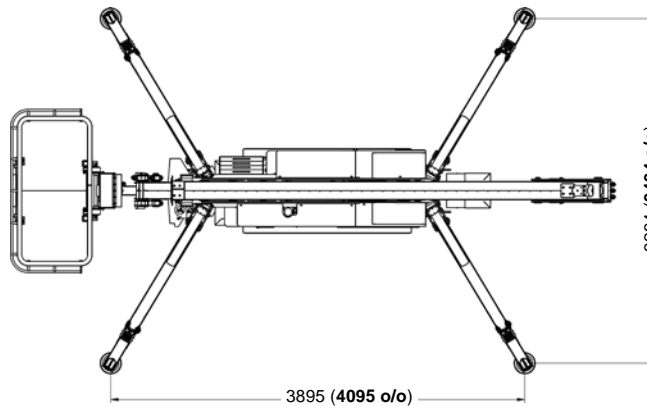
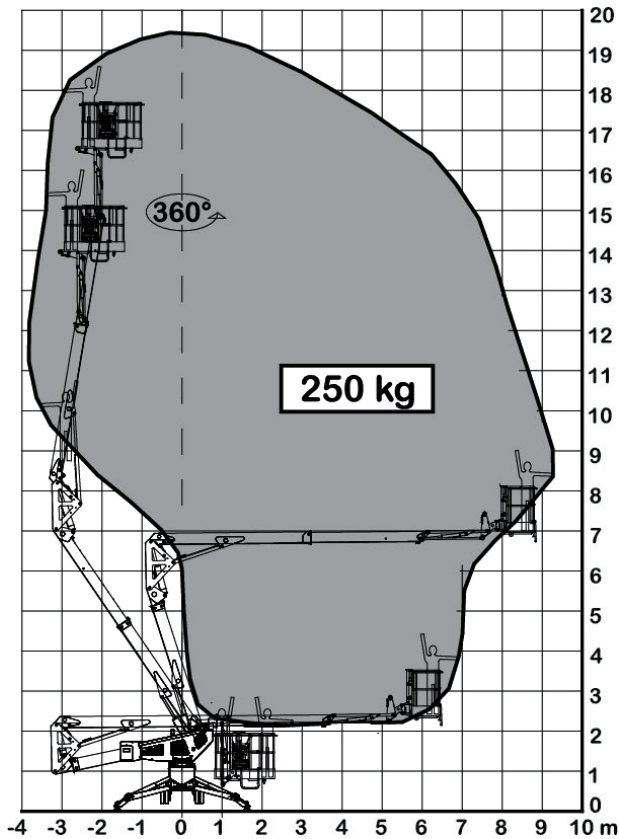
Built for rough terrain applications, the 2095's expandable tracks provide greater stability which also improves this units impressive ground clearance. Two speed drive also allows the operator to move the machine quickly from job to job.

**Far Left:** A winch is available as an option for load shifting versatility

**Above middle:** Extremely compact dimensions

**Above right:** Exceptional up-an-over reach due to being able to telescope out on both booms

# PB2095



<b>Max working height</b>	<b>19.40 m</b>
<b>Max horizontal outreach</b>	<b>9.50 m</b>
Max rated capacity	250 kg
<b>Weight : Engine + 240V</b>	<b>EP 2860 kg</b>
: Engine + 240V	ED 2910 kg
: Engine + Batteries	BD 2910 kg
Turret rotation	400°
Basket rotation	140°
Ground pressure driving (approx)	37.8 kN/m <sup>2</sup>
Max stabiliser force	11.81 kN
Max stabiliser pressure (std foot pad)	375 kN/m <sup>2</sup>
Traffic load (live load) travelling	3.1 kN/m <sup>2</sup>
Traffic load (live load) stabilised	2.3 kN/m <sup>2</sup>
Auto levelling	Std
Max slope for stabilisers (no extra pads)	12°
Gradeability lengthwise	20°
Gradeability sideways	17°
Standard engine	Honda 13 Hp Petrol
Optional engine	Kubota 14 Hp Diesel
Dual power options	240V or Batteries or Lithium
Expanding tracks	Std
Max drive speed	2.7 km/h
Radio control	Std
Electric emergency lowering	Optional
Hydraulic winch	Optional

(All specs E&OE and subject to change)