

Specifications

| Models | S-40 | | S-45 | |
|---------------------------------------|------------|---------|-------------|---------|
| | US | Metric | US | Metric |
| Measurements | | | | |
| Working height maximum* | 46 ft | 14.19 m | 51 ft | 15.72 m |
| Platform height maximum | 40 ft | 12.19 m | 45 ft | 13.72 m |
| Horizontal reach maximum | 31 ft 8 in | 9.67 m | 36 ft 8 in | 11.12 m |
| Below ground reach | 3 ft 2 in | 0.97 m | 4 ft 11 in | 1.5 m |
| A Platform length - 8 ft model | 3 ft | 0.91 m | 3 ft | 0.91 m |
| Platform length - 6 ft model | 2 ft 6 in | 0.76 m | 2 ft 6 in | 0.76 m |
| B Platform width - 8 ft model | 8 ft | 2.44 m | 8 ft | 2.44 m |
| Platform width - 6 ft model | 6 ft | 1.83 m | 6 ft | 1.83 m |
| C Height - stowed | 8 ft 2 in | 2.49 m | 8 ft 2 in | 2.49 m |
| - stowed with Trax option | 8 ft 2 in | 2.49 m | 8 ft 2 in | 2.49 m |
| D Length - stowed | 24 ft 3 in | 7.39 m | 27 ft 10 in | 8.48 m |
| - transport (jib tucked under) | | | 22 ft 4 in | 6.80 m |
| E Width - standard tires | 7 ft 6 in | 2.30 m | 7 ft 6 in | 2.30 m |
| - Trax option | 7 ft 7 in | 2.31 m | 7 ft 7 in | 2.31 m |
| F Wheelbase | 7 ft 3 in | 2.20 m | 7 ft 3 in | 2.20 m |
| G Ground clearance - center | 1 ft .5 in | 0.32 m | 1 ft .5 in | 0.32 m |

Productivity

| | | | | |
|-------------------------------|-------------------------------------|----------|-----------------------|----------|
| Lift capacity | 500 lbs | 227 kg | 500 lbs | 227 kg |
| Platform rotation | 160° | | 160° | |
| Vertical jib rotation | | | 135° | |
| Turntable rotation | 360° continuous | | 360° continuous | |
| Turntable tailswing | 2 ft 10 in | 0.86 m | 2 ft 10 in | 0.86 m |
| Drive speed - stowed | 4.8 mph | 7.7 km/h | 4.8 mph | 7.7 km/h |
| - raised or extended | 0.68 mph | 1.1 km/h | 0.68 mph | 1.1 km/h |
| - Trax option stowed | 2.5 mph | 4.0 km/h | 2.5 mph | 4.0 km/h |
| - Trax option raised | 0.68 mph | 1.1 km/h | 0.68 mph <td 1.1 km/h | |
| Gradeability - 2WD - stowed** | 30% | | 30% | |
| - 4WD - stowed** | 40% | | 40% | |
| Turning radius - inside | 6 ft 8 in | 2.0 m | 6 ft 8 in | 2.0 m |
| - outside | 15 ft 8 in | 4.78 m | 15 ft 8 in | 4.78 m |
| - Trax option inside | 7 ft 9 in | 2.36 m | 7 ft 9 in | 2.36 m |
| - Trax option outside | 17 ft | 5.18 m | 17 ft | 5.18 m |
| Controls | 12 V DC proportional | | 12 V DC proportional | |
| Tires - RT lug | 12.5L-16SL front / 12-16.5 NHS rear | | Trax | |

Power

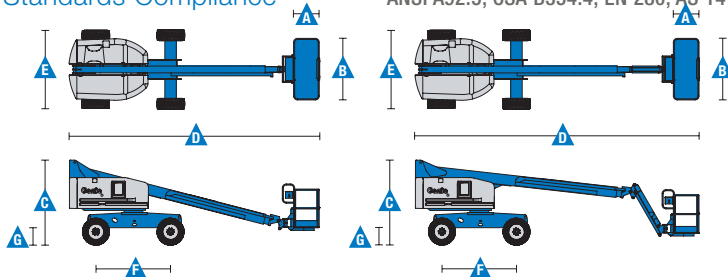
| | | | | |
|-------------------------|--|-------|---|-------|
| Power source | 49 hp (36.54 kW) Deutz diesel T4f D2.9L4 | | 49 hp (36.54 kW) Perkins diesel T4f 404D-22 | |
| | | | 60hp (44.74kW) Ford gas/LPG MSG425 | |
| Auxiliary power unit | 12 V DC | | 12 V DC | |
| Hydraulic tank capacity | 45 gal | 170 L | 45 gal | 170 L |
| Fuel tank capacity | 20 gal | 76 L | 20 gal | 76 L |

Weight***

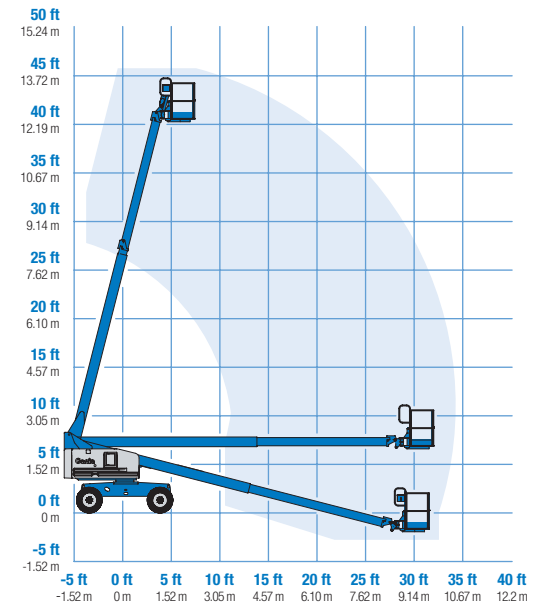
| | | | | |
|----------|------------|----------|------------|----------|
| Standard | 12,310 lbs | 5,584 kg | 15,270 lbs | 6,926 kg |
| Trax | 13,680 lbs | 6,205 kg | 16,670 lbs | 7,561 kg |

Standards Compliance

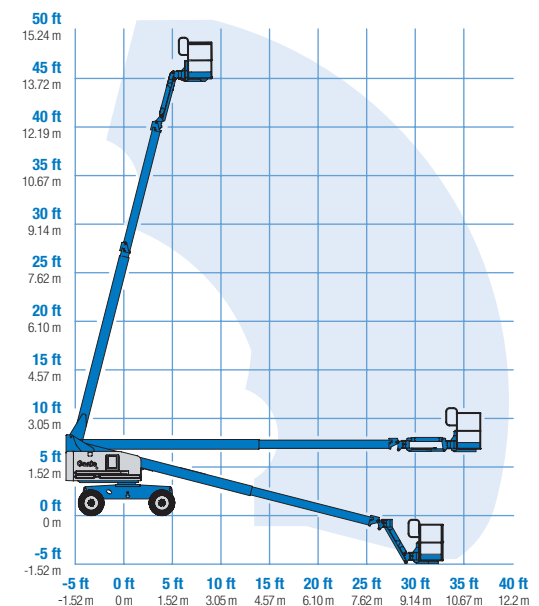
ANSI A92.5, CSA B354.4, EN 280, AS 1418.10



Range Of Motion S-40



Range Of Motion S-45



* The metric equivalent of working height adds 2 m to platform height. U.S. adds 6 ft to platform height.
 ** Gradeability applies to driving on slopes. See operator's manual for details regarding slope ratings.
 *** Weight will vary depending on options and/or country standards.

Features

| Standard Features | Easily Configured To Meet Your Needs | Options & Accessories |
|---|--|--|
| <p>Measurements</p> <p>S-40</p> <ul style="list-style-type: none"> • 46 ft (14.19 m) working height • 31 ft 8 in (9.65 m) horizontal reach • 500 lbs (227 kg) lift capacity <p>S-45</p> <ul style="list-style-type: none"> • 51 ft (15.72 m) working height • 36 ft 8 in (11.18 m) horizontal reach • 500 lbs (227 kg) lift capacity <p>Productivity</p> <ul style="list-style-type: none"> • Self-leveling platform • 160° hydraulic platform rotation • Proportional joystick controls • Fuel select switch on platform and ground control panels (Gas/LPG models)* • Drive enable • AC power cord to platform • Horn • Hour meter • Tilt alarm • Descent alarm • 360° continuous turntable rotation • Locking turntable covers • Positive traction drive • Two speed wheel motors • Telematics ready connector • Entry Toeboard • Lift Guard™ Contact Alarm <p>Power</p> <ul style="list-style-type: none"> • 12 V DC auxiliary power • Anti-restart engine protection • Auto engine fault shutdown • Intake air heater (Deutz engine) | <p>Platform Options</p> <ul style="list-style-type: none"> • Steel 8 ft (2.44 m) tri entry with side swing gate (standard) • Steel 6 ft (1.83 m) dual entry with side swing gate <p>Jib Options</p> <ul style="list-style-type: none"> • Non-jib (S-40 only) • 5 ft (1.52 m) jib boom (S-45 only) <p>Engine Options</p> <ul style="list-style-type: none"> • 49 hp (36.54 kW) Deutz diesel T4f** (standard) • 49 hp (36.54 kW) Perkins diesel T4f** • 60hp (44.74kW) Ford Gas/LPG <p>Drive Options</p> <ul style="list-style-type: none"> • 2WD • 4WD (standard) <p>Axle Options</p> <ul style="list-style-type: none"> • Active oscillation (4WD) • Non-oscillating (2WD) <p>Tire Options</p> <ul style="list-style-type: none"> • Rough terrain air-filled (standard) • Rough terrain foam-filled • Rough terrain non-marking (air or foam-filled) • High flotation air-filled • Sealant treated air-filled • Trax (track system) | <p>Productivity Options</p> <ul style="list-style-type: none"> • Half-mesh platform inserts • Platform top auxiliary rail • Welder Ready package • Air line to platform • Hydraulic oil cooler • Specialty hydraulic oil (cold weather, fire resistant, or biodegradable) • Hostile environment kit • Deluxe hostile environment kit • Aircraft protection package (6 ft platform only) • Thumb rocker steer • Alarm package • Panel cradle package • Lockable platform control box covers • Tow package • Work light package • Operator Protective Structure*** • Fall Arrest Bar <p>Power Options</p> <ul style="list-style-type: none"> • Engine gauge package* • AC generator packages (110V/60Hz - 220V/50Hz, 2200W) • Cold Weather Packages • Diesel scrubber/muffler (catalytic muffler, Tier 4i only) • LPG tank 33.5 lbs (15.19 kg) capacity • Intake air pre-cleaner (Tier 4i only) |



* Available only with Ford engine
 ** Also available as Tier 4i in limited regions
 *** Available through aftermarket parts only