

Specifications

| Models | Z-34/22 IC 2WD | | Z-34/22 IC 4WD | |
|------------------------------------|----------------|---------|----------------|---------|
| Measurements | US | Metric | US | Metric |
| Working height maximum* | 40 ft 6 in | 12.52 m | 40 ft 7 in | 12.54 m |
| Platform height maximum | 34 ft 6 in | 10.52 m | 34 ft 7 in | 10.54 m |
| Horizontal reach maximum | 22 ft 3 in | 6.78 m | 22 ft 3 in | 6.78 m |
| Up and over clearance maximum | 15 ft | 4.57 m | 15 ft 1 in | 4.6 m |
| A Platform length | 2 ft 6 in | 0.76 m | 2 ft 6 in | 0.76 m |
| B Platform width | 4 ft 8 in | 1.42 m | 4 ft 8 in | 1.42 m |
| C Height - stowed | 6 ft 7 in | 2.00 m | 6 ft 9 in | 2.06 m |
| D Length - stowed | 18 ft 6 in | 5.64 m | 18 ft 7 in | 5.66 m |
| E Storage height | 7 ft 5 in | 2.26 m | 7 ft 6 in | 2.29 m |
| F Storage length | 13 ft 5 in | 4.08 m | 13 ft 6 in | 4.11 m |
| G Width | 5 ft 8 in | 1.73 m | 6 ft 1 in | 1.85 m |
| H Wheelbase | 6 ft 2 in | 1.88 m | 6 ft 2 in | 1.88 m |
| I Ground clearance - center | 6 in | 0.15 m | 6.5 in | 0.17 m |

Productivity

| | | | | |
|--------------------------|-------------------------------|----------|-------------------------------|----------|
| Lift capacity | 500 lbs | 227 kg | 500 lbs | 227 kg |
| Platform rotation | 180° | | 180° | |
| Vertical jib rotation | 139° | | 139° | |
| Turntable rotation | 355° non-continuous | | 355° non-continuous | |
| Turntable tailswing | zero | | zero | |
| Drive speed - stowed | 3.0 mph | 4.8 km/h | 3.0 mph | 4.8 km/h |
| Drive speed - raised** | 0.68 mph | 1.1 km/h | 0.68 mph | 1.1 km/h |
| Gradeability - stowed*** | 37% | | 45% | |
| Turning radius - inside | 5 ft 9 in | 1.75 m | 5 ft 11 in | 1.80 m |
| Turning radius - outside | 13 ft 1 in | 4 m | 13 ft 6 in | 4.11 m |
| Controls | 12V DC proportional / 2 speed | | 12V DC proportional / 2 speed | |
| Tires - air-filled | 9 x 14.5 in | | 10 x 16.5 in rough terrain | |

Power

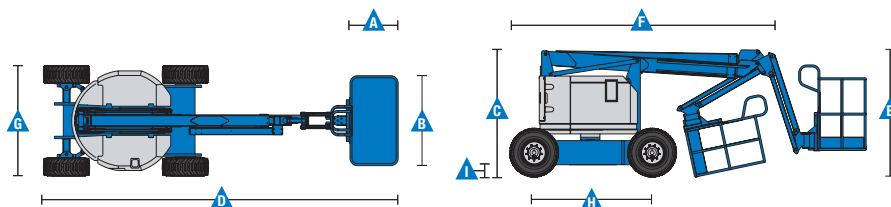
| | | | | |
|-------------------------|--|--------|---------|--------|
| Power source | 29 hp (21.6 kW) GM Gas/LPG 26 hp (19.4 kW) Kubota diesel T4f D1105 24.6 hp (18.3 kW) Perkins diesel T4f 403F | | | |
| Auxiliary power unit | 12V DC | | 12V DC | |
| Hydraulic tank capacity | 19 gal | 71.9 L | 19 gal | 71.9 L |
| Fuel tank capacity | 9.0 gal | 35.2 L | 9.3 gal | 35.2 L |

Weight****

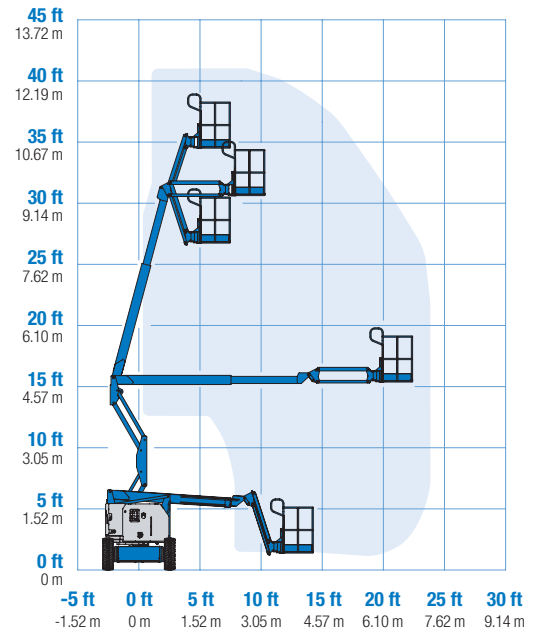
10,150 lbs 4,604 kg 10,450 lbs 4,740 kg

Standards Compliance

ANSI A92.5, CSA B354.4, EN 280, AS 1418.10



Range Of Motion Z-34/22 IC



* The metric equivalent of working height adds 2 m to platform height. U.S. adds 6 ft to platform height.
 ** In lift mode (platform raised), the machine is designed to operate on firm, level surfaces only.
 *** Gradeability applies to driving on slopes. See operator's manual for details regarding slope ratings.

Features

Standard Features

Measurements

Z-34/22 IC 2WD

- 40 ft 6 in (12.52 m) working height
- 22 ft 3 in (6.78 m) horizontal reach
- 15 ft (4.57 m) up and over clearance
- Up to 500 lbs (227 kg) lift capacity

Z-34/22 IC 4WD

- 40 ft 7 in (12.37 m) working height
- 22 ft 3 in (6.78 m) horizontal reach
- 15 ft 1 in (4.6 m) up and over clearance
- Up to 500 lbs (227 kg) lift capacity

Productivity

- 4 ft (1.22 m) jib with 139° working range
- Self-leveling platform
- Hydraulic platform rotation
- Proportional joystick controls
- Drive enable
- AC power cord to platform
- Horn
- Hour meter
- Tilt alarm
- Descent alarm
- Zero tailswing and front arm swing
- 355° non-continuous turntable rotation
- Locking turntable covers
- Two speed wheel motors
- Telematics ready connector
- Lift Guard™ Contact Alarm
- Dual parallelogram for vertical wall tracking

Power

- 12 V DC auxiliary power

Easily Configured To Meet Your Needs

Platform Options

- Steel 4 ft 8 in (1.42 m) with sliding mid-rail (standard)
- Steel 3 ft 10 in (1.17 m) with sliding mid-rail

Jib

- 4 ft (1.22 m) jib boom

Engine Options

- 40hp PSI (GM) .998L gas/LPG
- 26 hp (19.4 kW) Kubota, T4f diesel
- 24.6 (18.3kW) Perkins, T4f diesel

Drive Options

- 2WD
- 4WD

Tire Options

- Industrial air-filled*
- Rough terrain air-filled
- Industrial foam-filled*
- Industrial non-marking air or foam-filled*
- Rough terrain foam-filled
- Sealant treated air-filled

Options & Accessories

Productivity Options

- Platform swing gate
- Half-mesh platform inserts with swing gate
- Platform top auxiliary rail
- Air line to platform
- Specialty hydraulic oil (Cold weather, fire resistant or biodegradable)
- Aircraft protection package**
- Hostile environment kit
- Alarm package
- Light package
- Lockable platform control box cover
- Florescent tube caddy***
- Pipe cradle (pair)***

Power Options

- Engine gauge package
- AC Generator Packages (110 V / 60 Hz - 220 V / 50 Hz, 2000 W)
- Cold Weather Package
- LPG tank 33.5 lbs (15.19 kg) capacity



* 2WD only

** Reduces platform weight capacity to 440 lbs

*** Available through aftermarket parts only